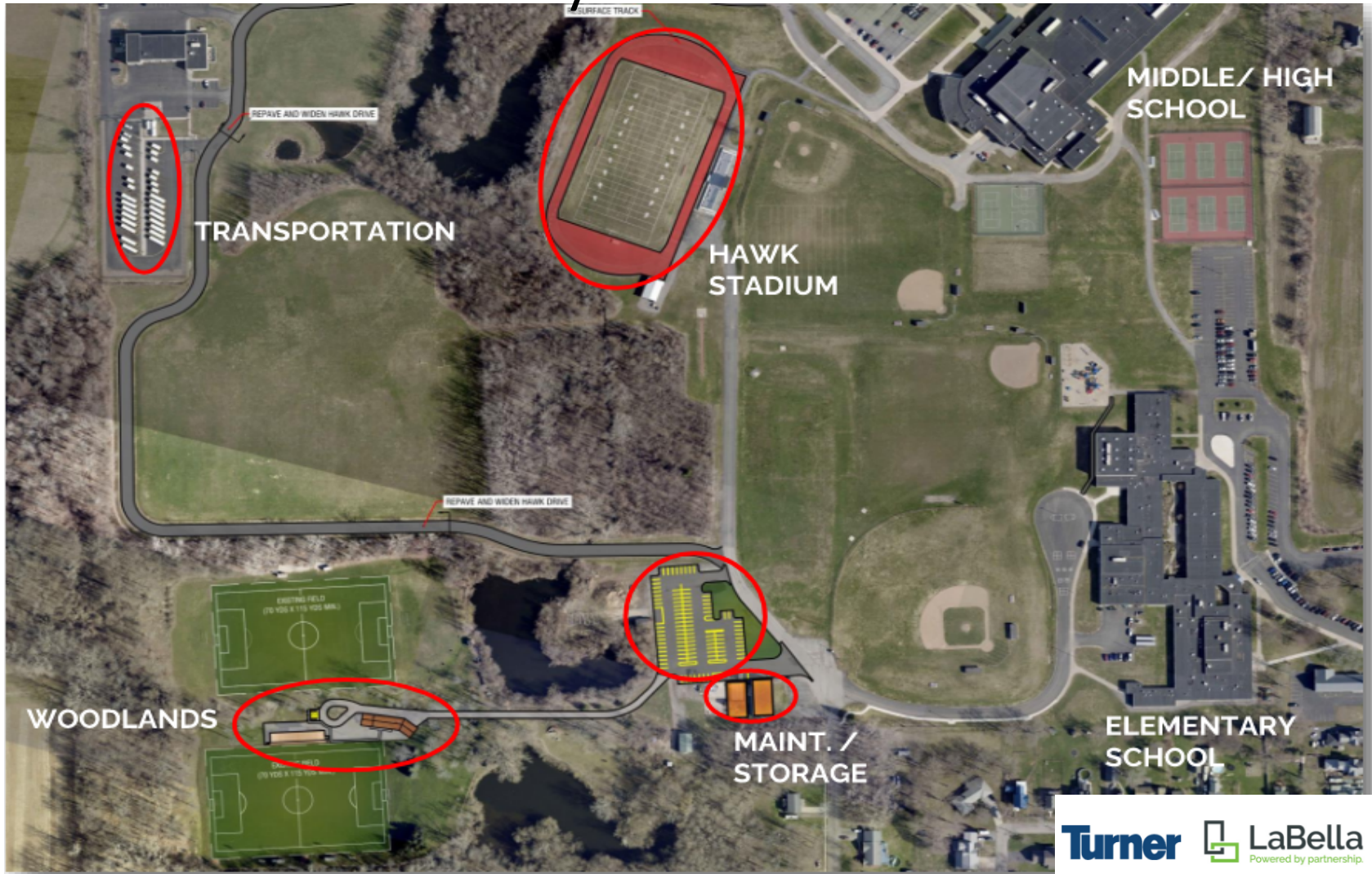
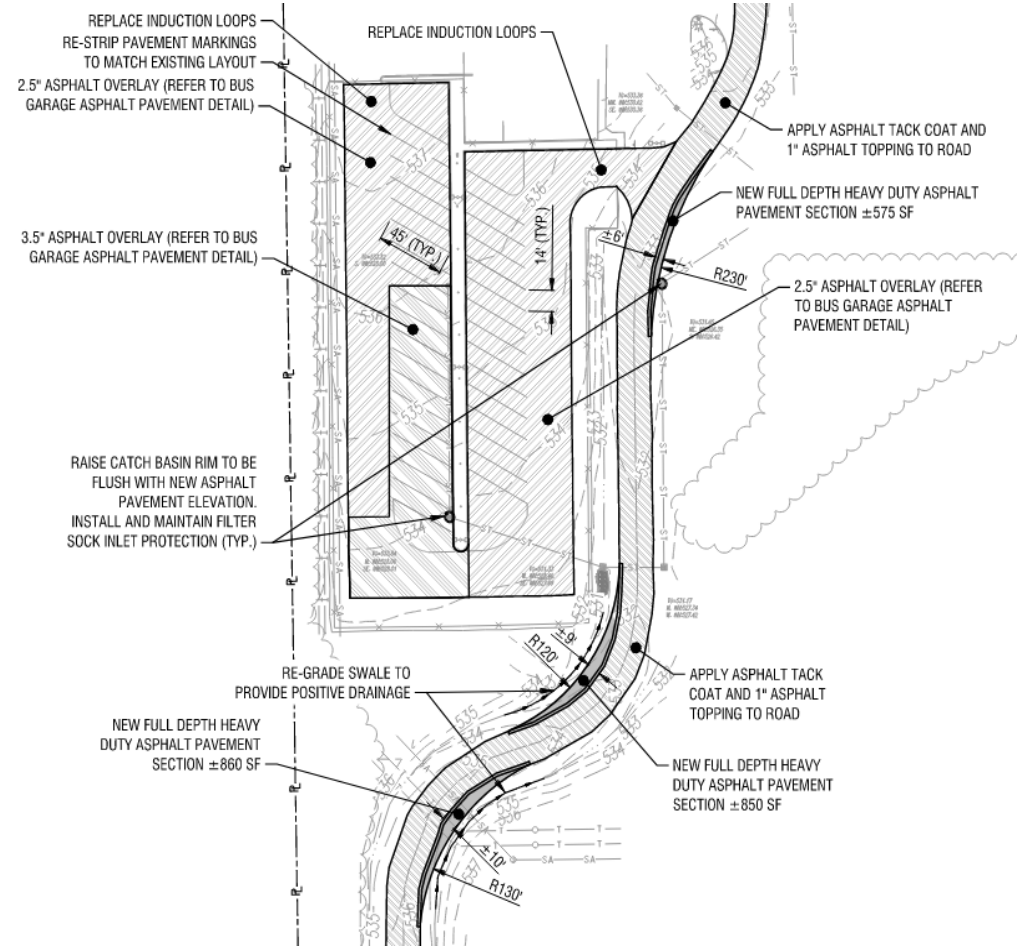
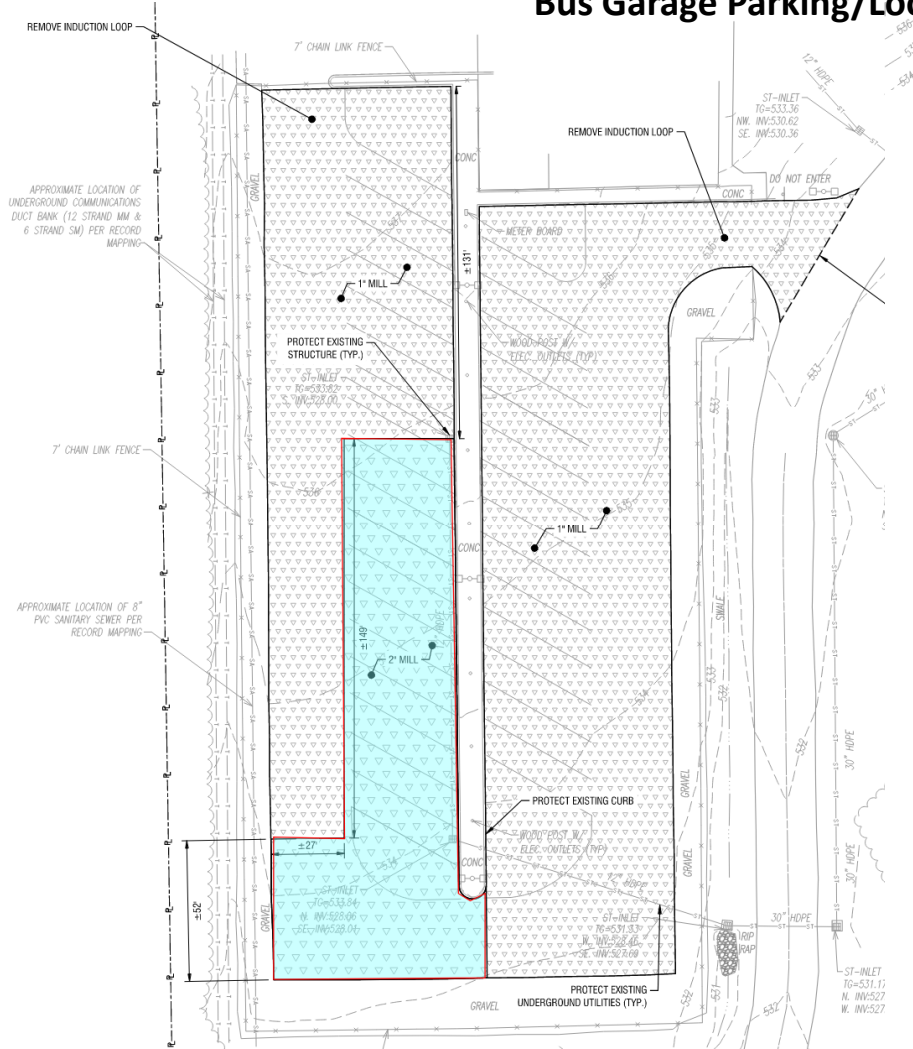


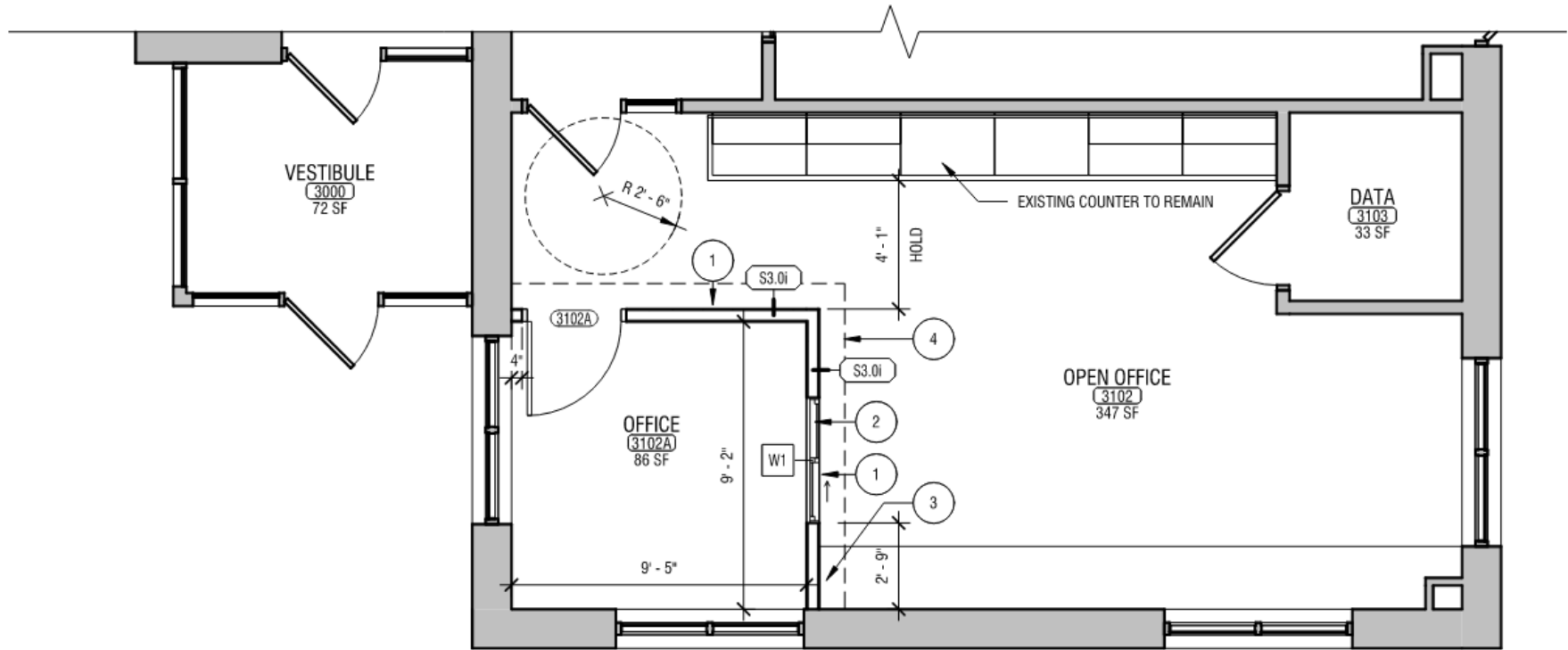
Holley CSD 2022 CIP



Bus Garage Parking/Loop Rd.



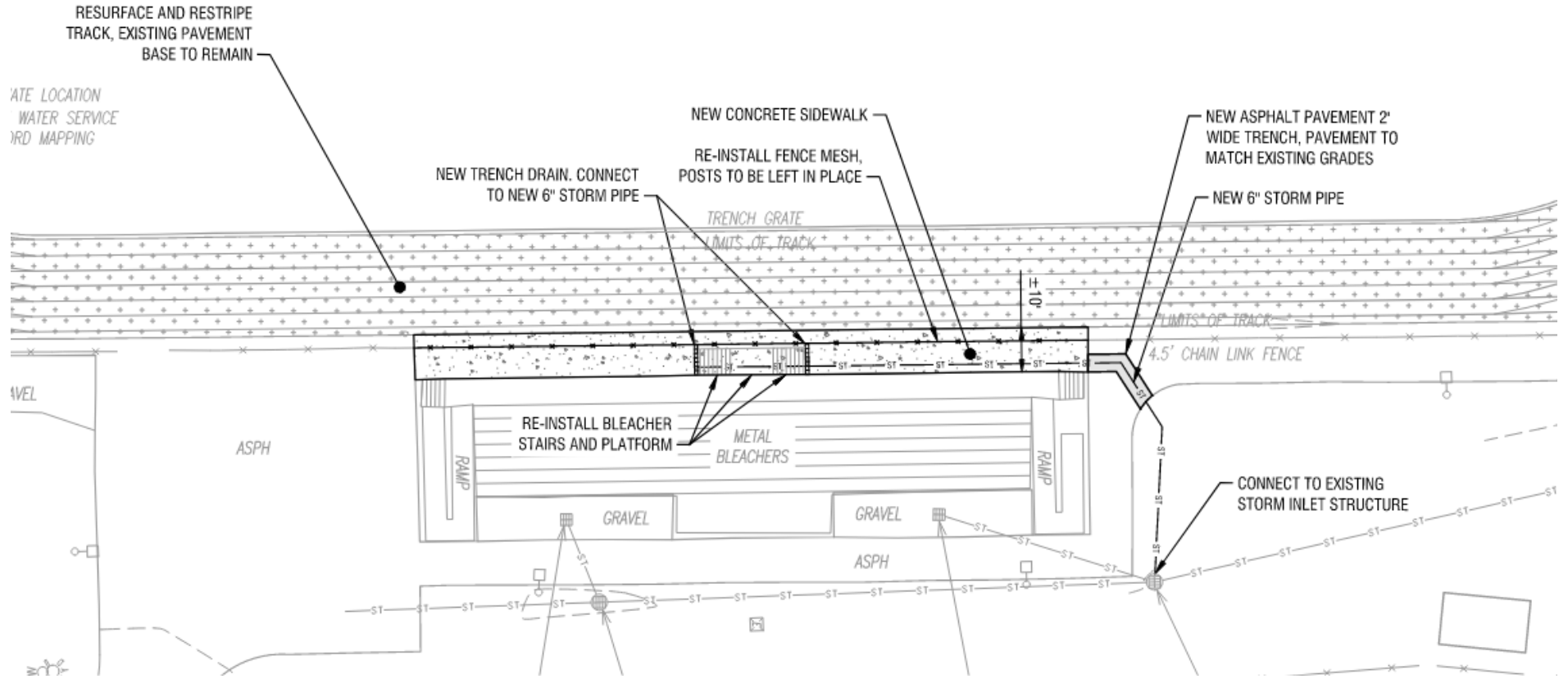
Bus Garage Office



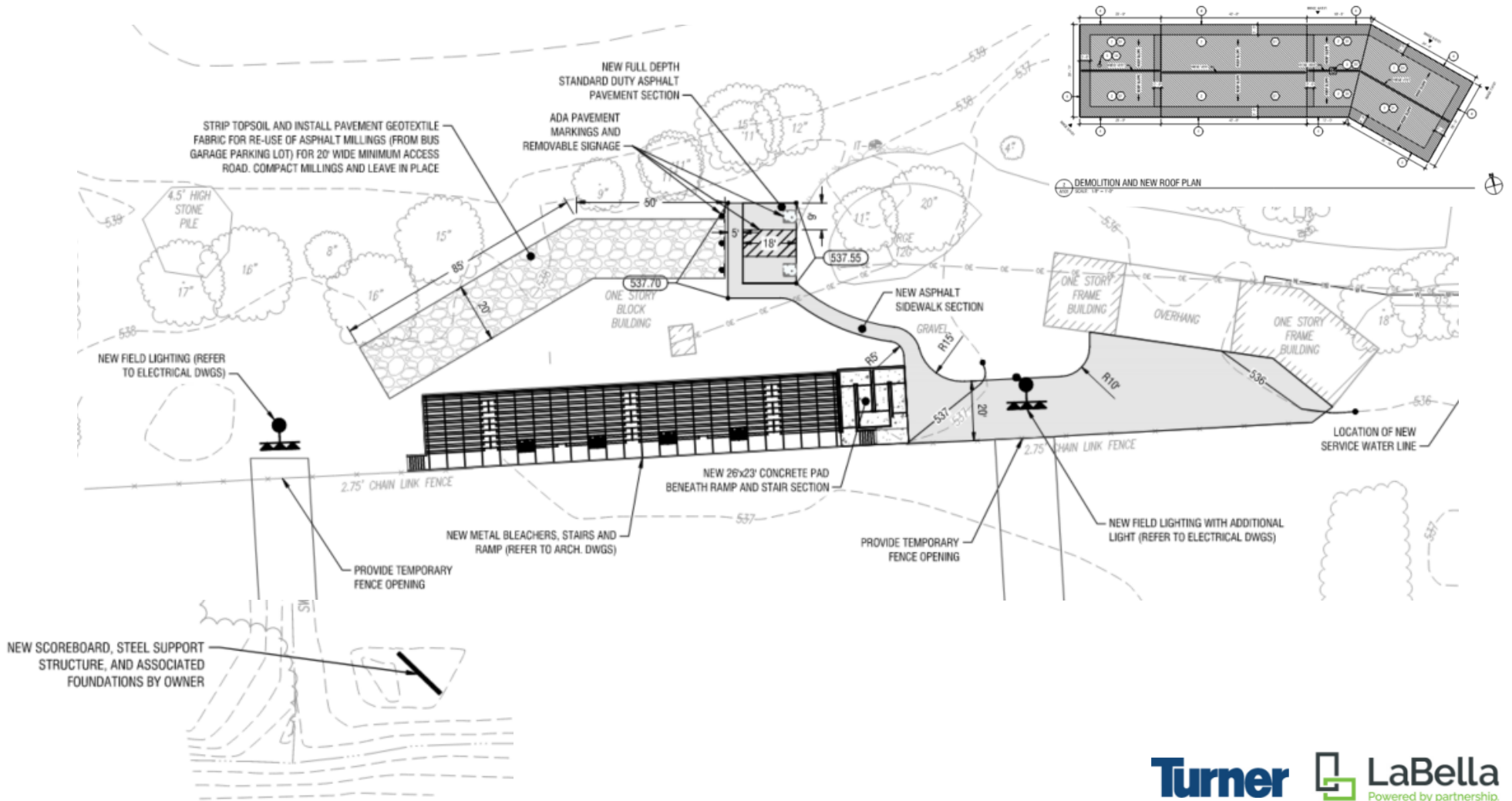
2 ENLARGED OFFICE PLAN
A101 SCALE: 1/4" = 1'-0"



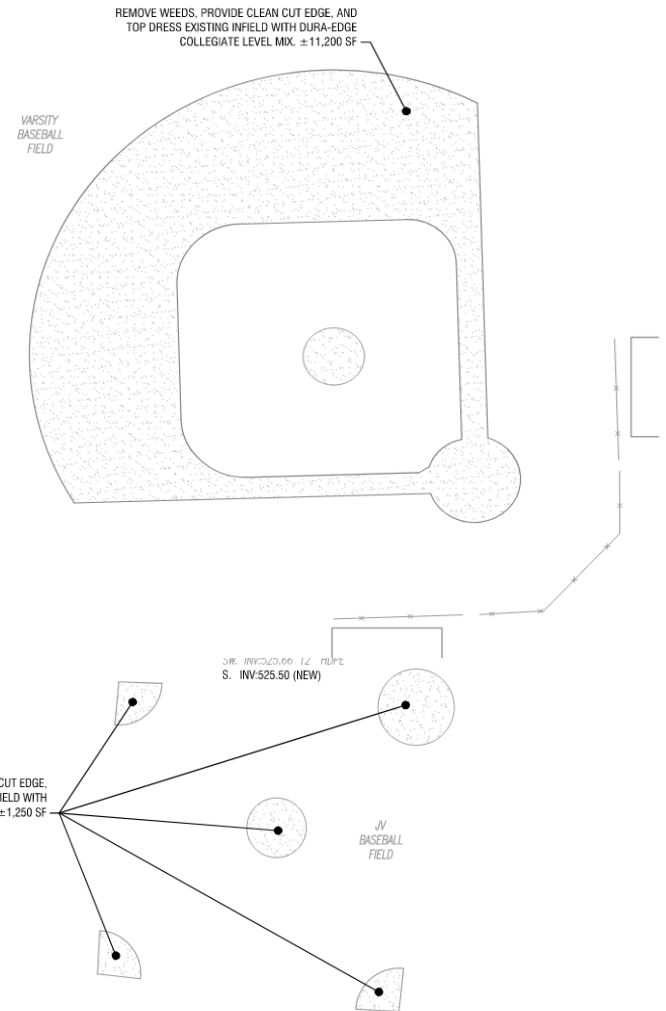
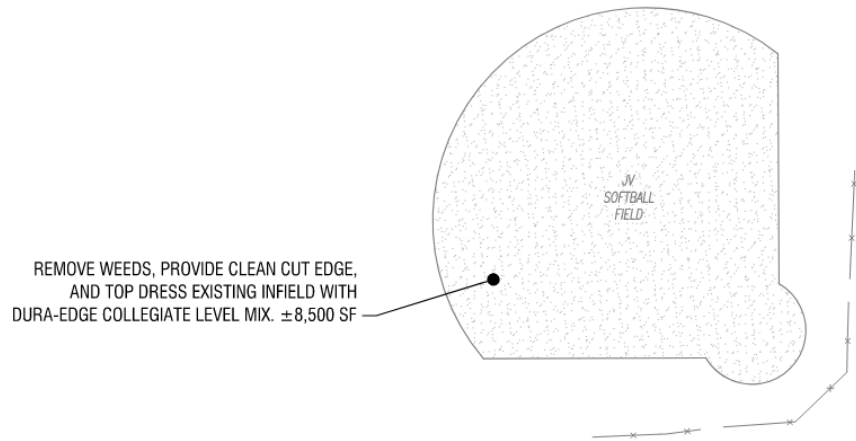
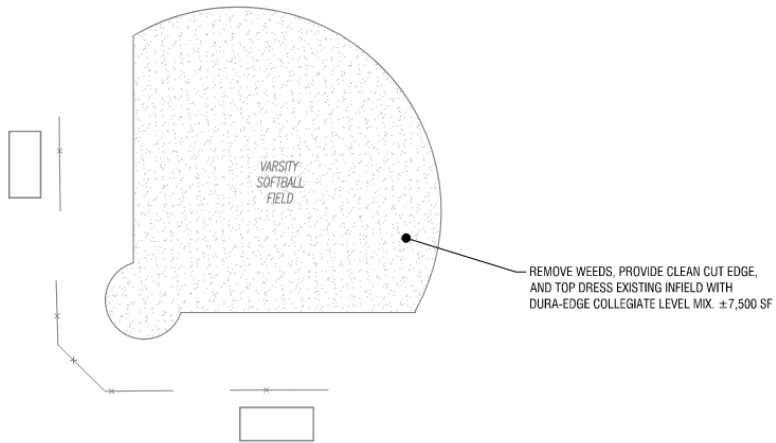
High School Stadium Sidewalk Repair and Track Re-surfacing



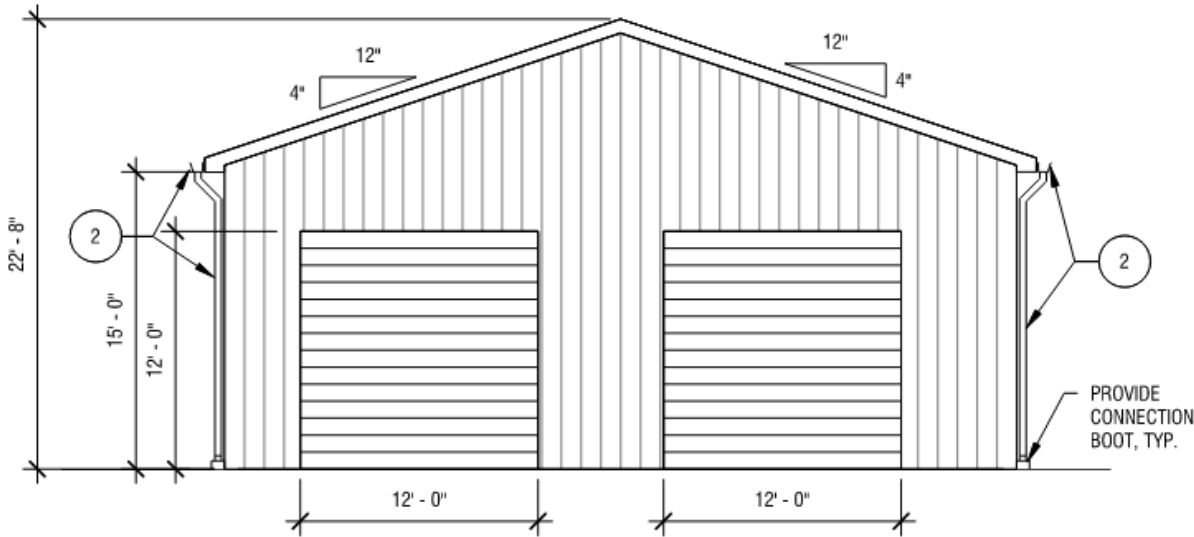
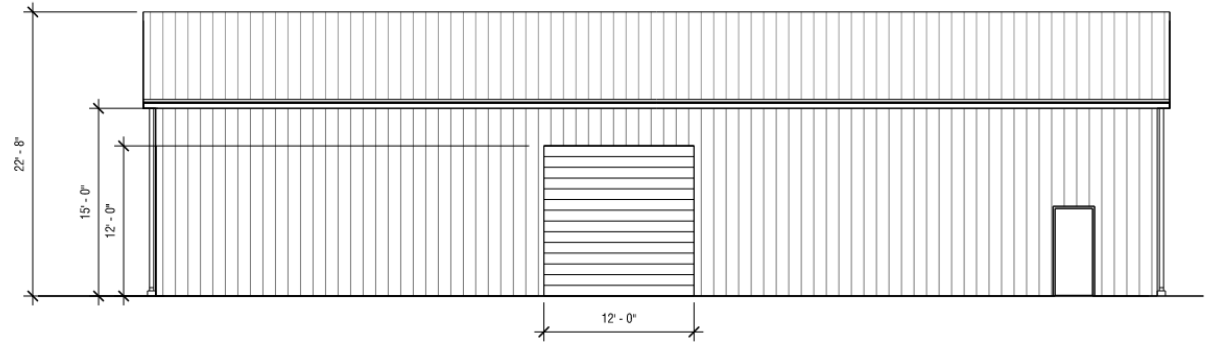
Woodlands – Final Scope



Minor improvements to infields at softball and baseball

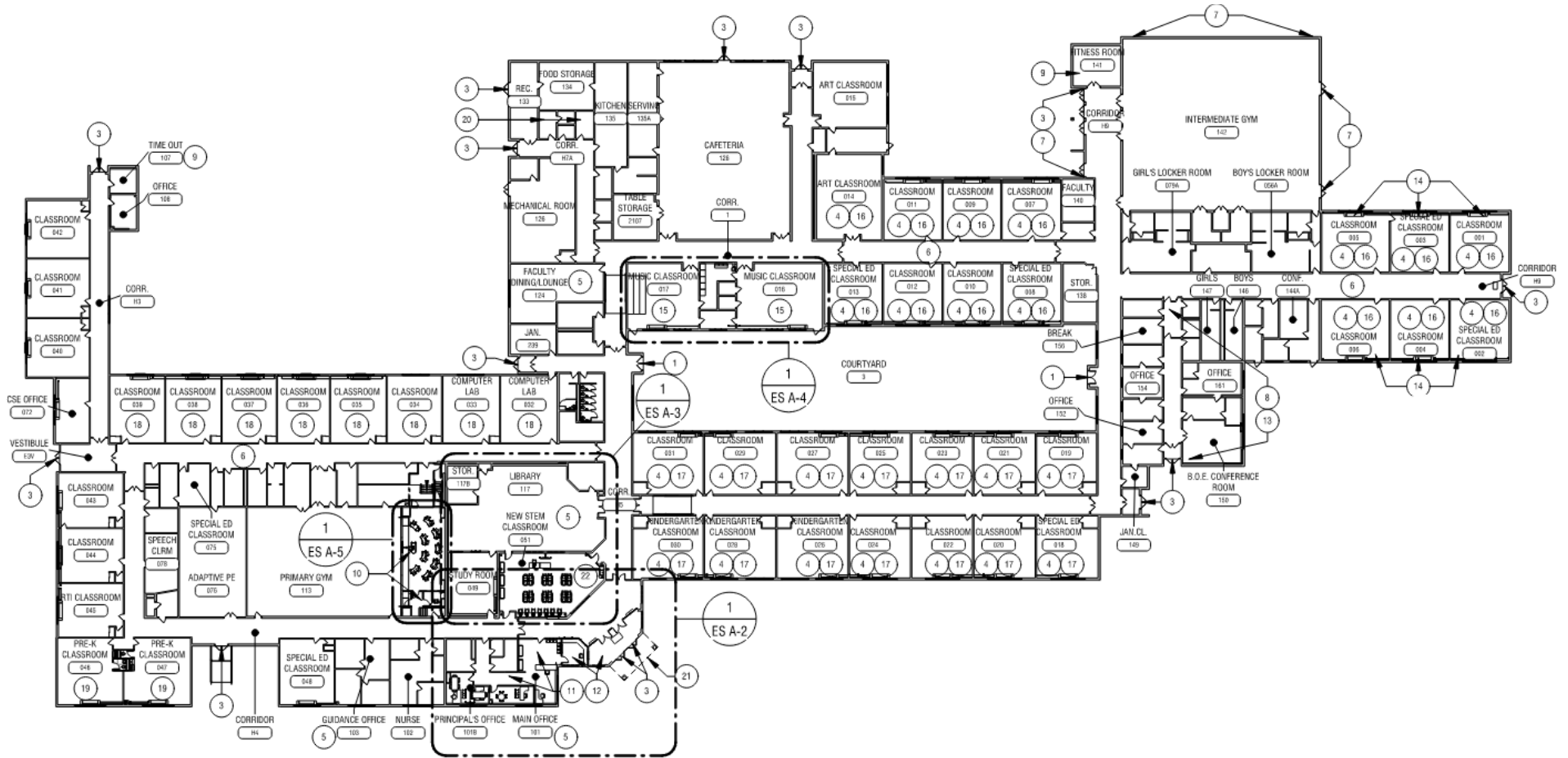


Pole Barn

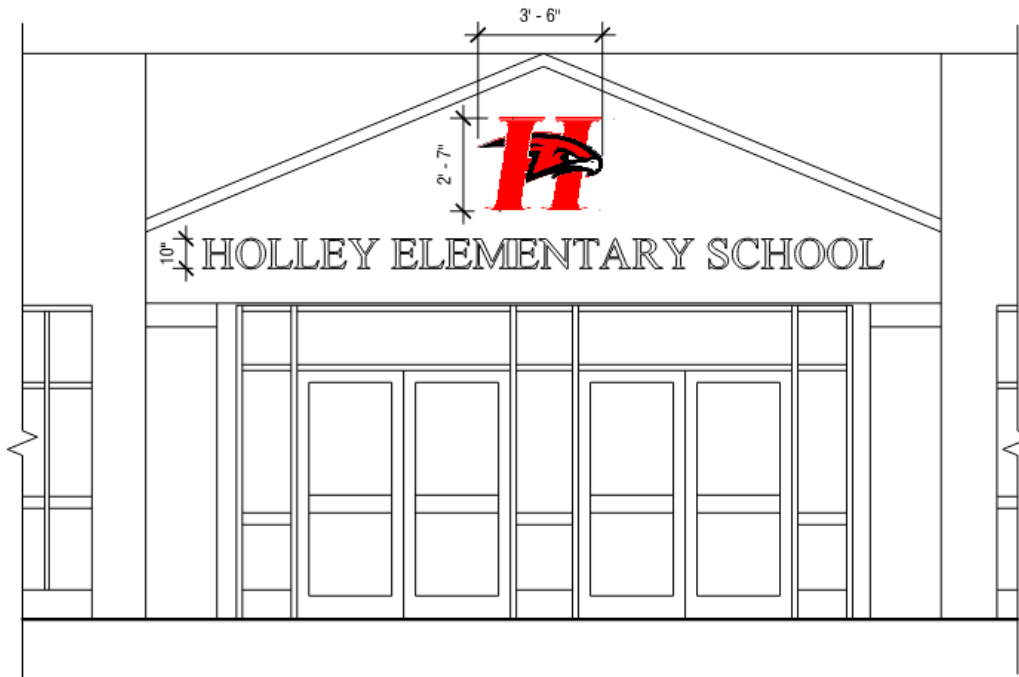


3 NORTH ELEVATION
A101 SCALE: 1/8" = 1'-0"

Elementary School



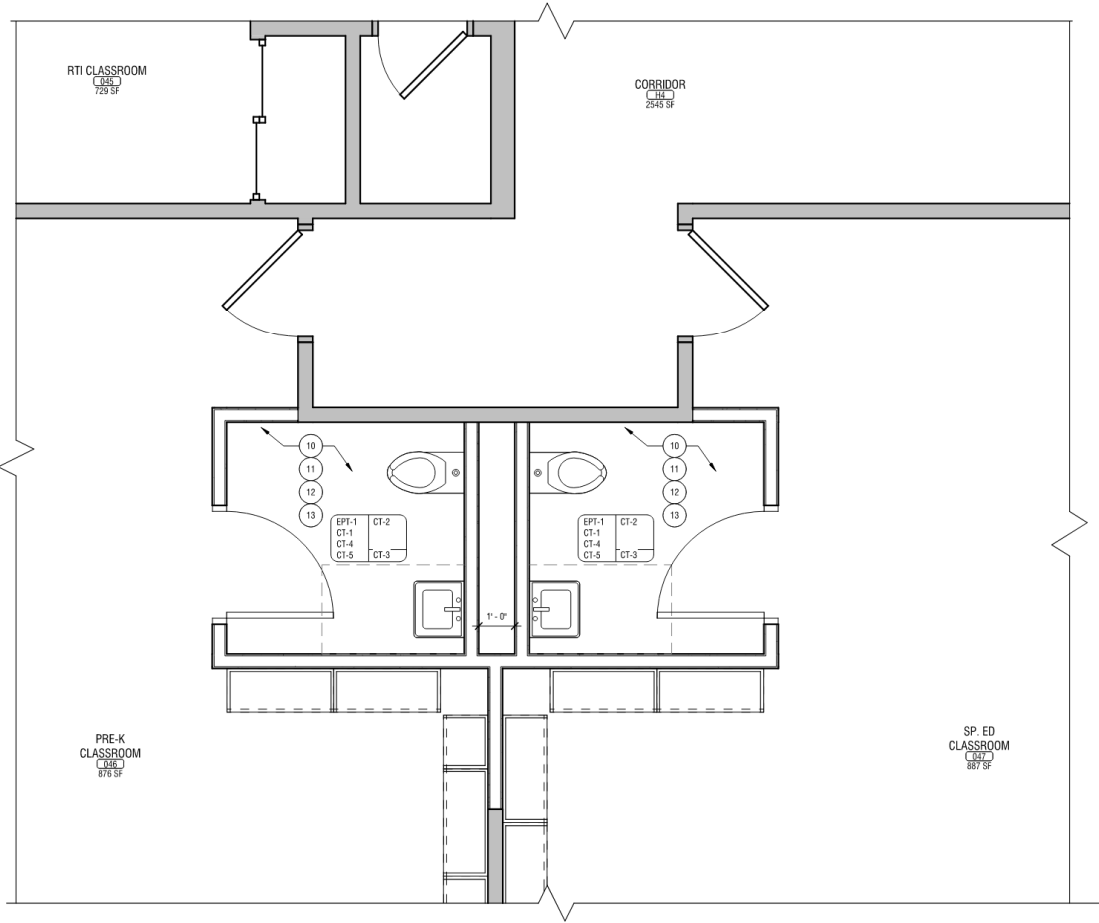
Elementary School – Entry Signage with Logo



Which logo should go on the Elementary School Entrance?

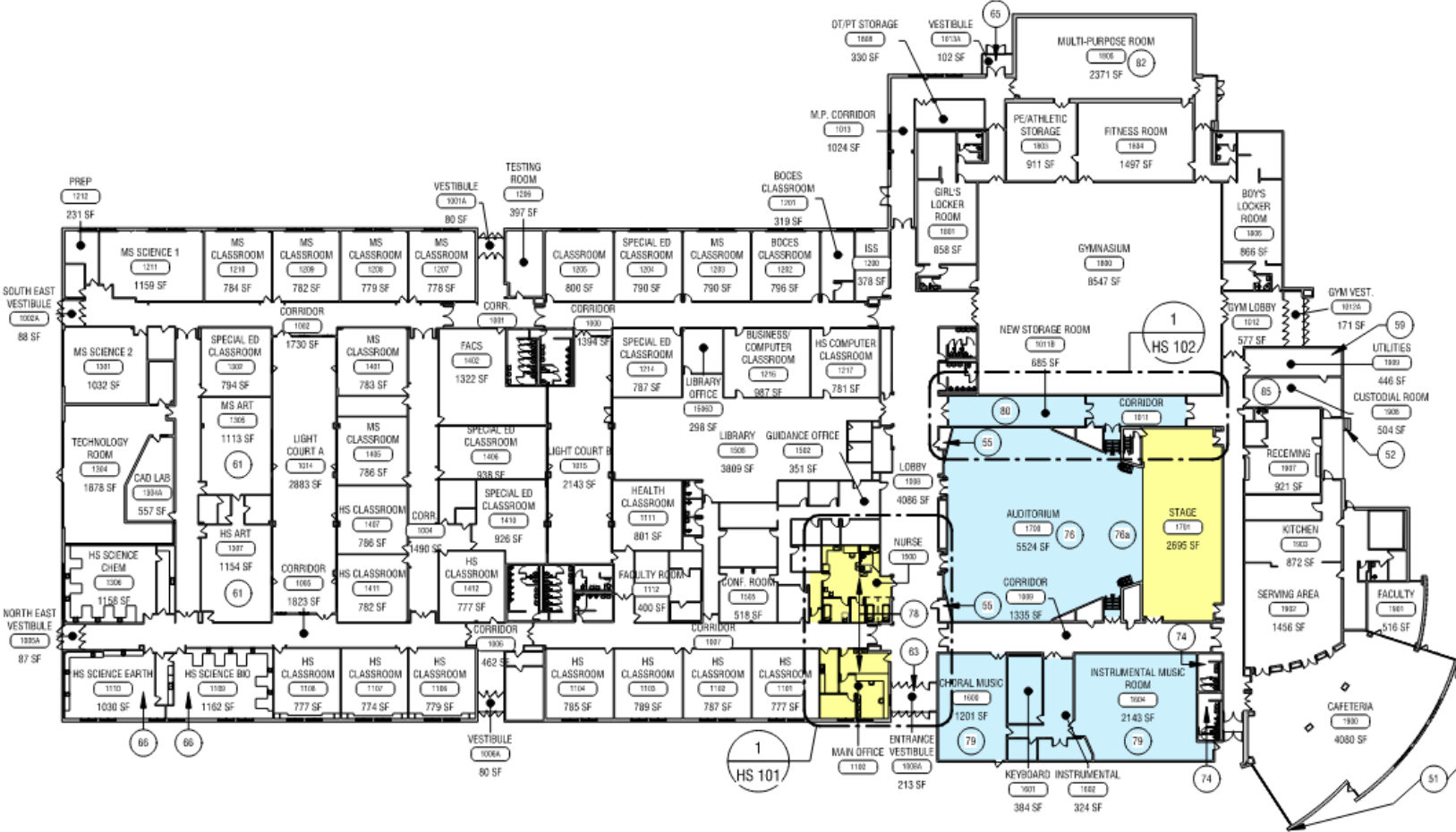
2 EXTERIOR SIGN ELEVATION
A101A SCALE: 1/4" = 1'-0"

Elementary School – Pre-K Bathrooms 046/047 – ADA Compliant



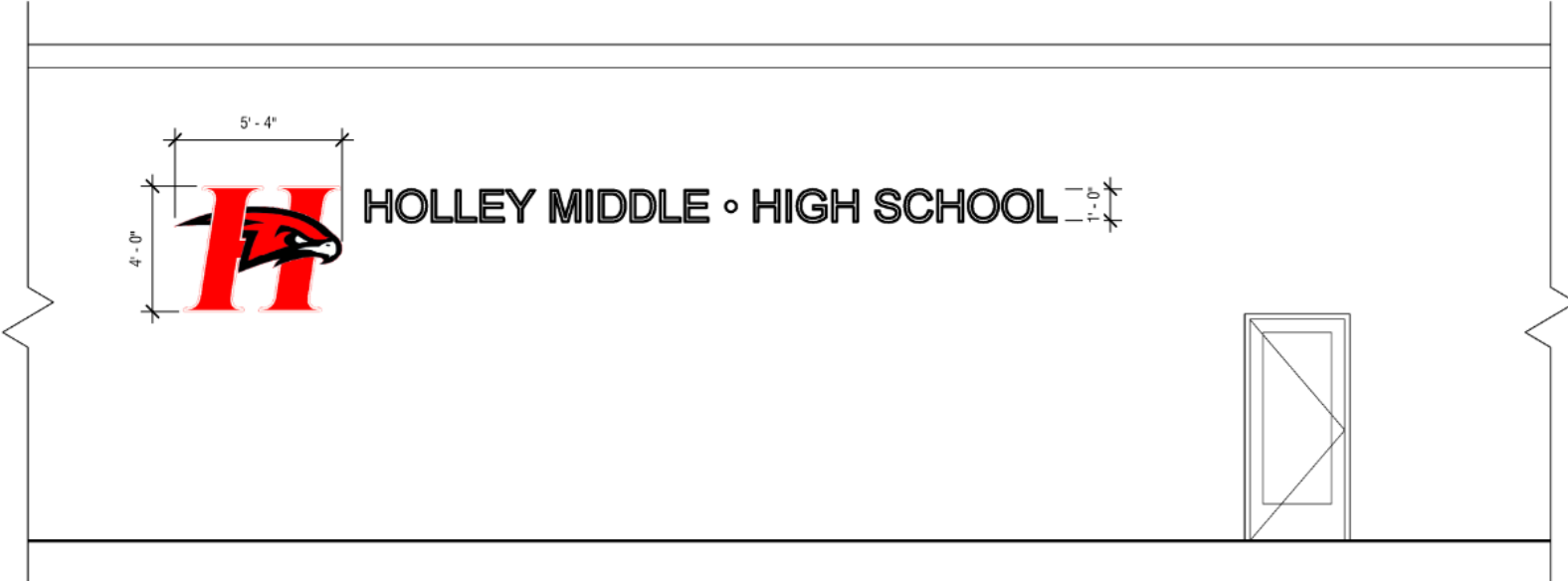
1
1104
ELEMNTARY SCHOOL FIRST FLOOR FINISH PLAN - AREA A
- PRE-K TOILET ROOMS
SCALE: 1/2" = 1'-0"

High School



RENOVATION AREAS - JR/SR HIGH SCHOOL
 HOLLEY CENTRAL SCHOOL DISTRICT

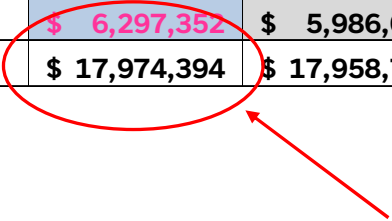
High School – Exterior Signage with Logo



2 EXTERIOR SIGN ELEVATION
A101 SCALE: 1/4" = 1'-0"

Estimate vs. Budget

Building	Total SED	Total DD	Total Pre-Ref	Delta SED - Pre-Ref
Elementary School	\$ 1,194,050	\$ 1,549,803	\$ 1,160,212	\$ 33,838
Elementary 5 Year Plan	\$ 6,543,019	\$ 6,472,671	\$ 5,274,263	\$ 1,268,756
JR SR High School	\$ 319,025	\$ 272,742	\$ 182,296	\$ 136,729
JR SR High School 5 Year Plan	\$ 3,620,947	\$ 3,677,466	\$ 5,651,649	\$ (2,030,702)
Site Construction, Maintenance Building & Bus Garage	\$ 6,297,352	\$ 5,986,035	\$ 5,804,067	\$ 493,285
	\$ 17,974,394	\$ 17,958,717	\$ 18,072,488	\$ (98,093)



ON BUDGET!

Carrying 2.5% Design Contingency – \$298,310
 Carrying 7.5% Construction Contingency - \$1,027,891

Current Planned Alternates

Alternates	Total SED
Alt-1 - Additional Lighting to Walking Path to Woodlands Fields	\$ 203,098
Alt-2 - DEDUCT Full Depth Replacement of Northern Half of Parking Lot	\$ (177,509)
Alt-3 (NOT USED) - Replace Vestibule 1008A Exterior Doors (HS)	\$ -
Alt-4 - Add New Intake Hoods to HS RTU-8 and ES Gym RTUs	\$ 20,326
Alt-5 - Drain, Clean, Refill ES Glycol System	\$ 15,056
Alt-6 - Replace Glycol Coils Downstream of RTAC-4	\$ 29,751
Alt-7 (NOT USED) - Replace ES Main Entrance Interior Vestibule Doors	\$ -
Alt-8 - DEDUCT Exterior Brick Repointing & Lintels at ES (BCS #3/5)	\$ (31,196)
Subtotal	\$ 59,526

Schedule Update

1. SED Submission – 8/15
2. SED is still reporting 14-16 week review time – Anticipate comments late November/Early December. We have seen it take closer to 5-6 months after comments/drawing revision to get final approval.

SED PROJECT REVIEW STATUS AS OF 10/11/2023:

Architectural Review:

- Average time for final architectural review will be about 14-16 weeks.
- The next architectural review will be 23-004. It was logged into the review system on **07/03/23.**

Engineering Review:

- Average time for final engineering review will be about 14-16 weeks.
- The next engineering review will be 22-2472. It was logged into the review system on **06/28/23.**

Turner Construction is working on front ends and procuring Cooperative Purchase pricing